

# Falcon and Raptor Series

## Application Note: SQL Server Configuration

Copyright © Protocol Insight. All rights reserved. Licensed software products are owned by Protocol Insight or its suppliers, and are protected by national copyright laws and international treaty provisions.

Protocol Insight products are covered by U.S. and foreign patents, issued and pending. Information in this manual supersedes all previously published material. Details, specifications and pricing subject to change.

Protocol insight is a registered trademark of Protocol Insight, LLC.

MIPI and the MIPI logo are a licensed trademark of the MIPI Alliance.

UFSA and UFS Logo are a trademark of the Universal Flash Storage Association

JEDEC® and the JEDEC logo are registered trademarks of JEDEC Solid State Technology Association.

Contact Protocol Insight at:

[sales@protocolinsight.com](mailto:sales@protocolinsight.com)

[support@protocolinsight.com](mailto:support@protocolinsight.com)

[www.protocolinsight.com](http://www.protocolinsight.com)

# Contents

- Installing your SQL ..... 1
- Option 1: Resetting Your SQL Database..... 1
- Option 2: Reconfiguring your SQL Database..... 3
- Option 3: Manually Installing Microsoft SQL Server ..... 4
- Reconfiguring SQL for multiple permissions..... 7
- Contact Information..... 9

The Falcon/Raptor application software uses Microsoft SQL Server to manage trace and calculation data. Falcon/Raptor application software versions 1.4.5 and earlier must use Microsoft SQL Server 2014, while versions 1.6.0 and later can use either SQL Server 2014 or SQL Server 2017. In addition, some features available with the Falcon Series require Microsoft Visual Studio 2015.

## Installing your SQL

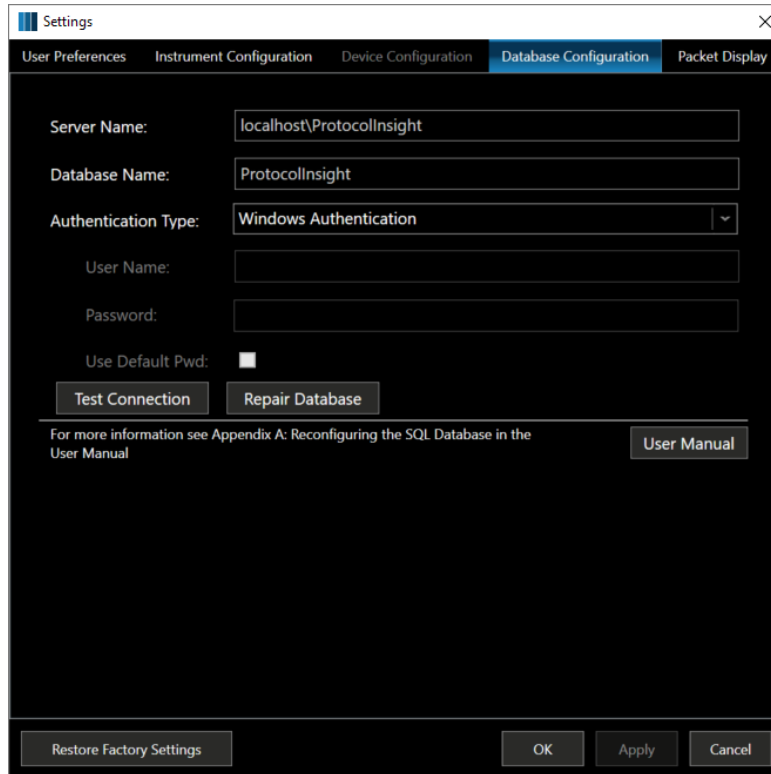
For the Falcon/Raptor installation process to be successful Microsoft SQL Server should be installed first using the Microsoft installer, followed by Microsoft Visual Studio 2015 (if applicable). Once both SQL and Visual Studio have been installed the Falcon/Raptor installer is used to install the Protocol Insight application and configure the SQL database and Visual Studios (if applicable).

In some instances it may be necessary to reset your database settings, reconfigure your database or install SQL Server manually. These are covered in the following three options:

### Option 1: Resetting Your SQL Database

Follow these steps to reset your SQL database:

1. Launch Protocol Insight software
2. Select Settings → Database Settings
3. Enter the following
  - a. Server Name: "localhost\ProtocollInsight"
  - b. Database Name: "ProtocollInsight"
  - c. Authentication Type: "Windows Authentication"
4. Click **Repair Database**.



5. Click **Yes** on the warning message box
6. You should get a dialog box saying "Database was restored successfully"
7. You can now use the application software normally

## Option 2: Reconfiguring your SQL Database

Follow these steps to reconfigure your SQL database:

1. Launch the Protocol Insight application software
2. Select Settings → Database Settings
3. Enter the following

**Server name:** Enter the SQL Server instance to connect to. By default this should be localhost\Protocolinsight.

**Database Name:** The name of the database on the server. By default this is Protocolinsight.

**Authentication Type:** Two authentication modes are available when connecting to an instance of the Database Engine:

**Windows Authentication** - Microsoft Windows Authentication mode allows a user to connect through a Windows user account.

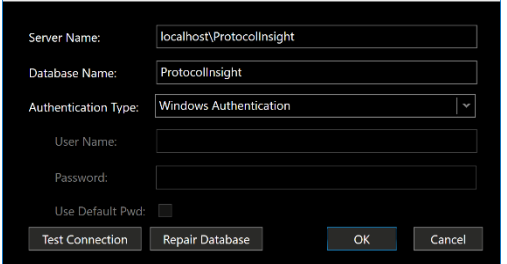
**SQL Server Authentication** - When a user connects with a specified login name and password from a non-trusted connection, SQL Server performs the authentication itself by checking to see if a SQL Server login account has been set up and if the specified password matches the one previously recorded. If the Authentication Type selected is SQL Server Authentication:

**User Name:** The SQL Server login id to connect to SQL Server should be “sa” if you are using the Default Password (see below).

**Password:** The Password to connect to SQL Server with.

**Use Default Password:** This will override the password with the default password for the sa account. User Name must be “sa” and the SQL Server install must be the default from installing the Falcon or Test Executive software.

When you have entered all the data, click Test Connection to make sure the server, database, and security are valid.



The screenshot shows a configuration dialog box for a SQL database. It has the following fields and controls:

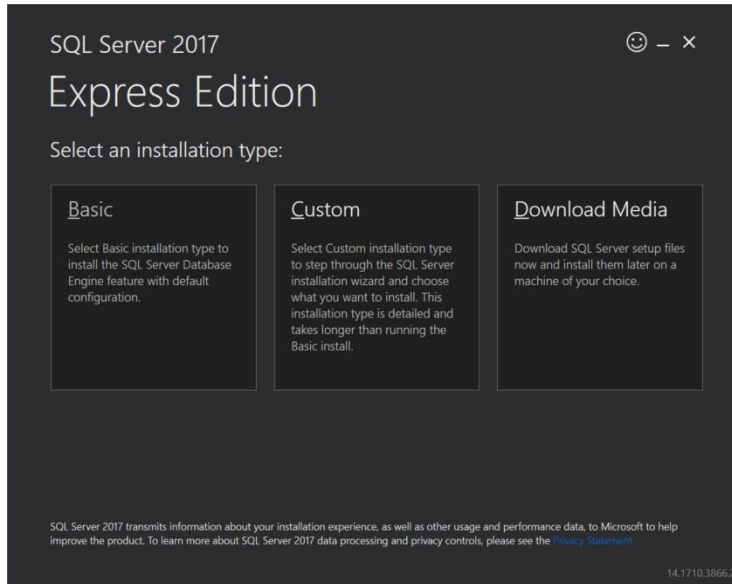
- Server Name: localhost\ProtocolInsight
- Database Name: ProtocolInsight
- Authentication Type: Windows Authentication (dropdown menu)
- User Name: (empty text box)
- Password: (empty text box)
- Use Default Pwd: (checkbox, currently unchecked)
- Buttons: Test Connection, Repair Database, OK, Cancel

## Option 3: Manually Installing Microsoft SQL Server

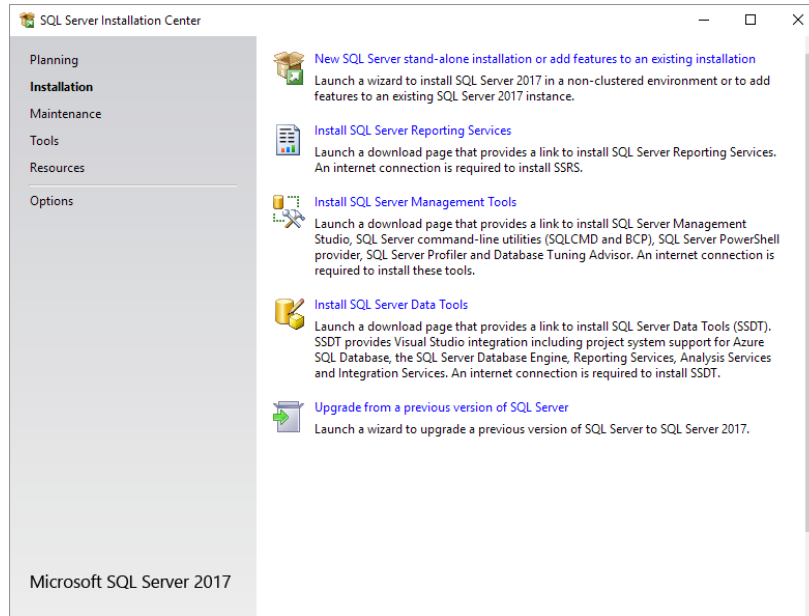
Follow these steps to manually install and configure your SQL database:

NOTE: If you are manually installing during setup, start with Step 3.

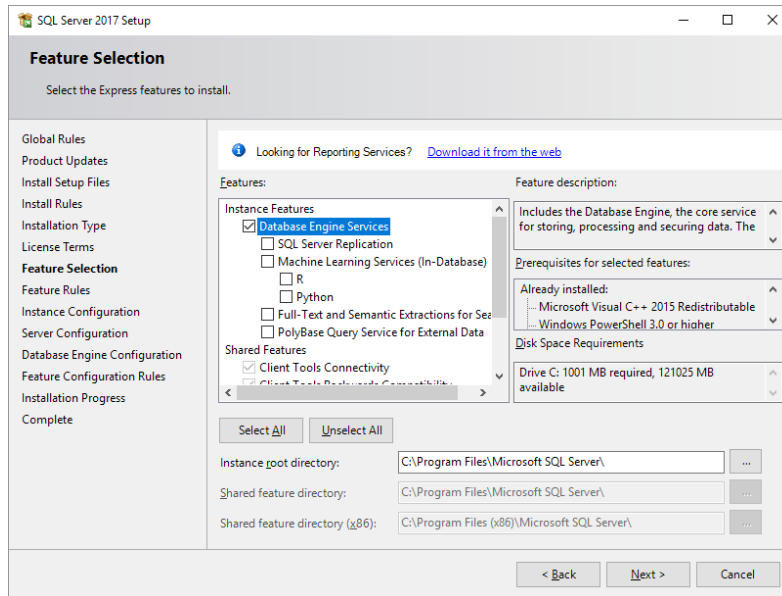
1. Obtain the SQL Server 2017 Express edition installation media from Microsoft
  - a. <https://www.microsoft.com/en-us/download/details.aspx?id=55994>
  - b. Click Download
2. Run SQLServer2017-SSEI-Expr.exe from your download location.
3. On the "Select an installation type" screen, choose Custom



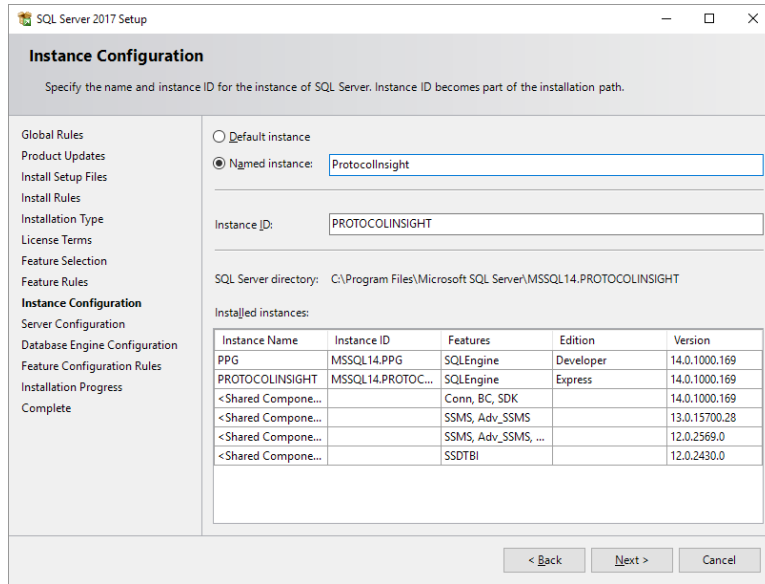
4. Select a download media location and Click Install  
***At this point the installation files will be downloaded from Microsoft. Once complete, the installation should start.***
5. SQL Server Installation Center - Click Installation on the list of options in the left pane
6. Click " **New SQL Server stand-alone installation or add features to an existing installation**"



7. Install Rules – Verify that you don't have any required updates and click Next
8. Installation Type – Choose **Perform a new installation of SQL Server 2017** and click Next
9. License Terms – Check **I accept the license terms** and click Next
10. Features Selection – Click the **Unselect All** button and then choose only the "Database Engine Services" feature. Click Next (You can optionally change the installation drive if you need to install to a drive other than C:\)



11. Instance Configuration – Chose **Named Instance** and Enter "ProtocolInsight" as the instance name. The Instance ID should automatically update to "PROTOCOLINSIGHT". Click Next.



12. Server Configuration – Leave the default options, click Next.
13. Database Engine Configuration – Click the **Add Current User** button if the current windows user is not listed in the **Specify SQL Server administrators** box. Click Next.
14. Wait for the installation to complete and click Finish.



## Reconfiguring SQL for multiple permissions

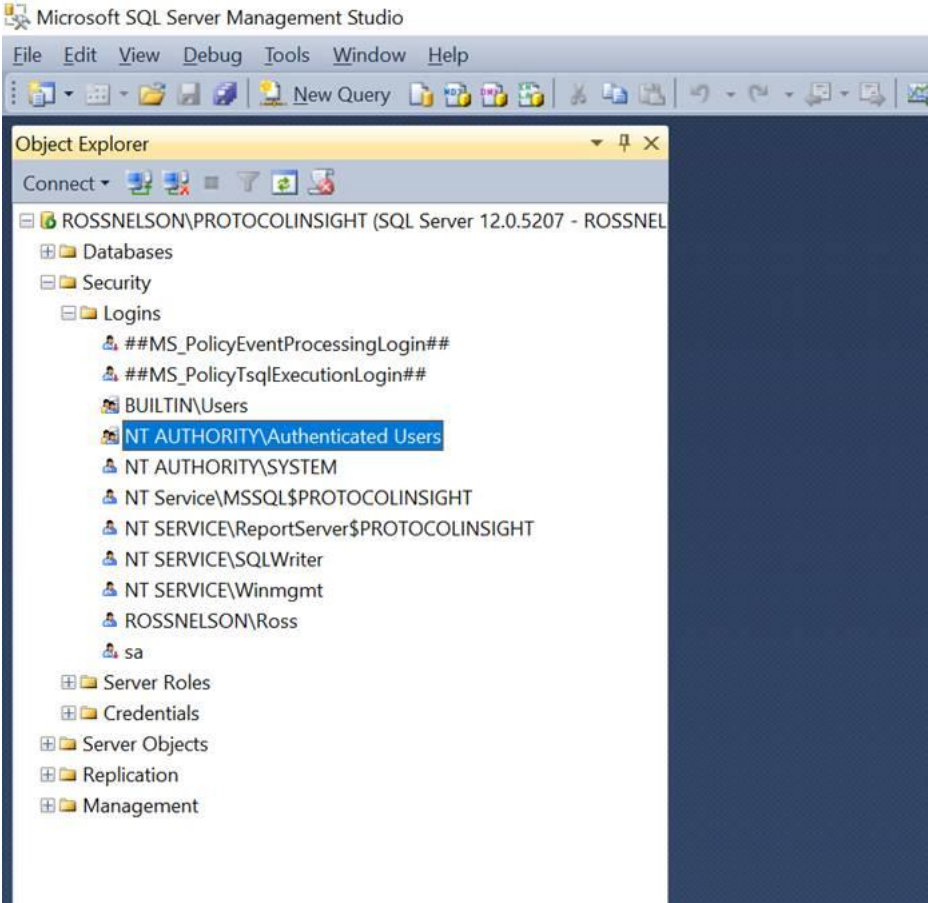
SQL is configured by default to a specific login account, which can cause SQL to fail to find the Protocol Insight database if multiple different login accounts being used to access the application software.

This link <http://www.protocolinsight.com/wp-content/uploads/2018/04/SetSQLPermissions.zip> will download a script that reconfigures SQL to grant permissions to any users that have already installed SQL Server. It works for 2017 and 2014 and must be run by the user that installed SQL Server initially.

When the script is run a very brief dialog will appear and disappear. Afterwards open SQL Server Management Studio (search for it from the Taskbar) and click “Connect” when at this dialog box:



If “NT AUTHORITY\Authenticated Users” is seen under Security Logins then the additional permissions have been added successfully:



## Contact Information

1. For additional information, to request a demonstration or quote, or place an order, please contact your local Protocol Insight representative or [sales@protocolinsight.com](mailto:sales@protocolinsight.com)
2. Support materials and examples files are available at <http://www.protocolinsight.com/support-materials/>
3. For technical support please contact your local Protocol Insight representative or [support@protocolinsight.com](mailto:support@protocolinsight.com)